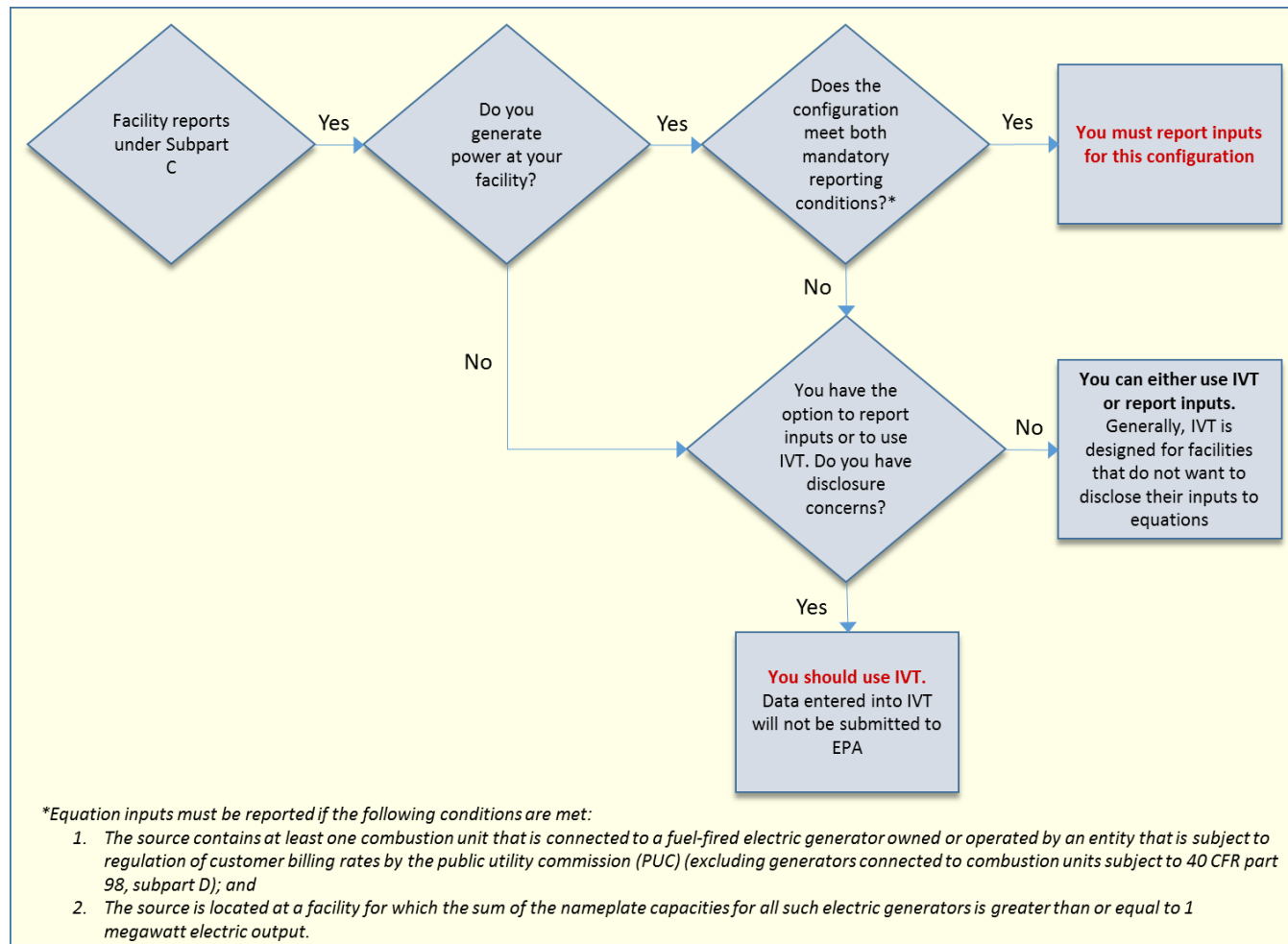


# General Stationary Fuel Combustion (Subpart C) and the Inputs Verification Tool

## Should You Use the Inputs Verification Tool for Subpart C?

Beginning in RY2014, facilities will need to determine if they should use the Inputs Verification Tool (IVT) to calculate emissions or if they should report the inputs to EPA *for each configuration* reporting under Subpart C. The following flowchart outlines this decision process:



**Note:** There is no difference in the calculations conducted when using IVT or when reporting inputs to EPA. This decision only impacts how your data will be handled. If you chose to use IVT, the inputs data will not be sent to EPA – it will be your responsibility to save your inputs verifier file (see [Entering Inputs and Saving Them Locally](#)). If you chose to report inputs to EPA, you will not need to create or save the inputs verifier file.

Once you have determined whether or not you will use IVT for a configuration, you can then determine if you are subject to back year reporting requirements. Facilities will need to submit deferred data for RY2010-2013 for any configuration where they do not use IVT. See [Deferred Reporting: Subpart C](#) for information on submitting deferred data for Subpart C. Facilities that use IVT for all configurations will not need to submit deferred data.

## How do I enter this decision into e-GGRT?

Before you can begin data entry for any configuration under Subpart C, you will need to indicate whether or not you plan to use IVT for that configuration. E-GGRT will prompt you with several questions to guide you through this decision. Following is a description of how to navigate these screens.

When adding a new configuration, you will see a button labeled "Help me determine..." beneath "Will this configuration use IVT?" in the EQUATION INPUTS REPORTING FOR RY2015 section of the **Edit Configuration Information** page. Click this button to display the first question.

>> [Click this link to expand](#)

**EPA** United States Environmental Protection Agency

**e-GGRT** Electronic Greenhouse Gas Reporting Tool

HOME FACILITY REGISTRATION FACILITY MANAGEMENT DATA REPORTING

**DR Enterprises - TEST**  
**Subpart C: General Stationary Fuel Combustion (2015)**  
 Subpart C Overview » Single Unit Using Tiers 1, 2, or 3 » [Edit Configuration Information](#)

**CONFIGURATION INFORMATION**  
 For stationary combustion sources required to report under subpart C, e-GGRT requires a facility to identify which reporting option each unit or group of units will be using to report emissions. The different subpart C reporting options are referred to as configurations in e-GGRT. The individual configurations are designed to match the reporting options made available by the rule in 40 CFR 98.36.

Once a configuration is added, e-GGRT will allow the user to enter the required reporting elements for the configuration type selected. A facility may have multiple configuration types and/or multiple configurations of any given type.

For additional information about adding and editing a configuration and the different reporting configurations available, please use the e-GGRT Help link(s) provided. \* denotes a required field

**CONFIGURATION INFORMATION**  
 Configuration Type: Single Unit Using Tiers 1, 2, or 3  
 Unit Name/ID\*: (40 characters maximum)  
 Description (optional)  
 Unit Type\*: Select  
 Maximum Rated Heat Input Capacity: (mmBtu/hr)

**EQUATION INPUTS REPORTING FOR RY2015**  
 Will this configuration use IVT? To be determined. Please click the button below.  
[Help me determine...](#)

SAVE CANCEL

**EPA** United States Environmental Protection Agency

**e-GGRT** Electronic Greenhouse Gas Reporting Tool

HOME FACILITY REGISTRATION FACILITY MANAGEMENT DATA REPORTING

Hello, Richard Richards | My Profile | Logout

**DR Enterprises - TEST**  
**Subpart C: General Stationary Fuel Combustion (2015)**  
 Subpart C Overview » Single Unit Using Tiers 1, 2, or 3 » [Edit Configuration Information](#)

**CONFIGURATION INFORMATION**  
 For stationary combustion sources required to report under subpart C, e-GGRT requires a facility to identify which reporting option each unit or group of units will be using to report emissions. The different subpart C reporting options are referred to as configurations in e-GGRT. The individual configurations are designed to match the reporting options made available by the rule in 40 CFR 98.36.

Once a configuration is added, e-GGRT will allow the user to enter the required reporting elements for the configuration type selected. A facility may have multiple configuration types and/or multiple configurations of any given type.

For additional information about adding and editing a configuration and the different reporting configurations available, please use the e-GGRT Help link(s) provided. \* denotes a required field

**CONFIGURATION INFORMATION**  
 Configuration Type: Single Unit Using Tiers 1, 2, or 3  
 Unit Name/ID\*: (40 characters maximum)  
 Description (optional)  
 Unit Type\*: Select  
 Maximum Rated Heat Input Capacity: (mmBtu/hr)

**EQUATION INPUTS REPORTING FOR RY2015**  
 Will this configuration use IVT? To be determined. Please click the button below.  
[Help me determine...](#)

SAVE CANCEL

Paperwork Reduction Act Burden Statement | Contact Us

e-GGRT RY2015.R45 | SPC-08

**Question 1.** E-GGRT will ask you if the facility and the stationary combustion source configuration (e.g., individual unit, aggregation of units, common pipe, or common stack) meet both of the following conditions:

1. The facility contains at least one combustion unit that is connected to a fuel-fired electric generator owned or operated by an entity that is subject to regulation of customer billing rates by the public utility commission (PUC) (excluding generators connected to combustion units subject to 40 CFR part 98, subpart D); and
2. The source configuration is located at a facility for which the sum of the nameplate capacities for all such electric generators is greater than or equal to 1 megawatt electric output.

If both conditions are met, the facility is required to report inputs and cannot use IVT for the source:

If you answer “yes” and click SAVE, e-GGRT will return you to the **Edit Configuration Information** page, where "This configuration will not use IVT for equations calculations and will report equation inputs to EPA" will be displayed in the EQUATION INPUTS REPORTING FOR RY2015 section of the page.

If you answer “no,” you will be directed Question 2.

>> [Click this link to expand](#)

**EPA** United States Environmental Protection Agency

**e-GGRT** Greenhouse Gas Reporting Tool

HOME FACILITY REGISTRATION FACILITY MANAGEMENT DATA REPORTING

e-GGRT Help  
Using e-GGRT for Subpart C Reporting

ER Enterprises - TEST  
**Subpart C: General Stationary Fuel Combustion (2015)**  
Subpart C Overview » Single Unit Using Tiers 1, 2, or 3 » IVT Test Unit 1 » Equation Inputs Reporting

**EQUATION INPUTS REPORTING**  
Use this page to indicate how you would like to report inputs to equations for this configuration. \* denotes a required field

**CONFIGURATION INFORMATION**

Configuration Type	Single Unit Using Tiers 1, 2, or 3
Unit Name(s)	IVT Test Unit 1
Description	
Unit Type	GE (Boiler, other)

Will this configuration use IVT? To be determined. Please answer the questions below.

**PLEASE ANSWER THE FOLLOWING QUESTIONS FOR THIS CONFIGURATION**


Does this stationary combustion source configuration (e.g., individual unit, aggregation of units, common pipe, or common stack) meet both of the following conditions: 1. Connect at least one combustion unit that is connected to a fuel-fired electric generator owned or operated by an entity that is subject to regulation of customer billing rates by the public utility commission (PUC) (excluding generators connected to combustion units subject to 40 CFR part 98, subpart D); and 2. Is located at a facility for which the sum of the nameplate capacities for all such electric generators is greater than or equal to 1 megawatt electric output. If this source does not meet both of these criteria, you should select No.

☐ Yes, I am required to report inputs to equations for this configuration.  
☐ No


**Save** **Apply selection to all new configurations** **Cancel**

Pageback Reduction Act Back Statement | Contact Us

e-GGRT FE02015.PUB | EPC-02



United States  
Environmental Protection  
Agency



Electronic Greenhouse Gas  
Reporting Tool

HOME
FACILITY REGISTRATION
FACILITY MANAGEMENT
DATA REPORTING

Hello, Richard Richards | My Profile | Logout

e-GGRT Help
Using e-GGRT for Subpart C reporting

### DR Enterprises - TEST

## Subpart C: General Stationary Fuel Combustion (2015)

[Subpart C Overview](#) » [Single Unit Using Tiers 1, 2, or 3](#) » [IVT Test Unit 1](#) » [Equation Inputs Reporting](#)

#### EQUATION INPUTS REPORTING

Use this page to indicate how you would like to report [inputs to equations](#) for this configuration.

\* denotes a required field

#### CONFIGURATION INFORMATION

Configuration Type	Single Unit Using Tiers 1, 2, or 3
Unit Name/ID	IVT Test Unit 1
Description	
Unit Type	OB (Boiler, other)
Will this configuration use IVT?	To be determined. Please answer the question(s) below.

#### PLEASE ANSWER THE FOLLOWING QUESTIONS FOR THIS CONFIGURATION

Does this stationary combustion source configuration (e.g., individual unit, aggregation of units, common pipe, or common stack) meet both of the following conditions: 1. Contain at least one combustion unit that is connected to a fuel-fired electric generator owned or operated by an entity that is subject to regulation of customer billing rates by the public utility commission (PUC) (excluding generators connected to combustion units subject to 40 CFR part 98, subpart D); and 2. Is located at a facility for which the sum of the nameplate capacities for all such electric generators is greater than or equal to 1 megawatt electric output. If this source does not meet both of these criteria, you should select No.

☐ Yes, I am required to report [inputs to equations](#) for this configuration.
 ☐ No

Paperwork Reduction Act Burden Statement | Contact Us
e-GGRT RY2015.R45 | SPC-08

**Question 2.** E-GGRT will ask if you would like to use IVT or if you would like to report inputs to equations to EPA for the configuration.

If you select that you would like to use IVT and click SAVE, e-GGRT will return you to the **Edit Configuration Information** page, where "This configuration will use IVT for equations calculations and as a result, will not report equation inputs to EPA" will be displayed in the EQUATION INPUTS REPORTING FOR RY2015 section of the page.

If you select that you would like to report inputs to EPA, you will be directed to Question 3.

>> [Click this link to expand](#)



United States  
Environmental Protection  
Agency



Electronic Greenhouse Gas  
Reporting Tool

HOME
FACILITY REGISTRATION
FACILITY MANAGEMENT
DATA REPORTING

Hello, Richard Richards | My Profile | Logout

e-GGRT Help
Using e-GGRT for Subpart C reporting

### DR Enterprises - TEST

## Subpart C: General Stationary Fuel Combustion (2015)

[Subpart C Overview](#) » [Single Unit Using Tiers 1, 2, or 3](#) » [IVT Test Unit 1](#) » [Equation Inputs Reporting](#)

#### EQUATION INPUTS REPORTING

Use this page to indicate how you would like to report [inputs to equations](#) for this configuration.

\* denotes a required field

#### CONFIGURATION INFORMATION


Configuration Type	Single Unit Using Tiers 1, 2, or 3
Unit Name/ID	IVT Test Unit 1
Description	
Unit Type	OB (Boiler, other)
Will this configuration use IVT?	To be determined. Please answer the question(s) below.


#### PLEASE ANSWER THE FOLLOWING QUESTIONS FOR THIS CONFIGURATION

Because this stationary combustion source configuration does not meet both of the following criteria: 1. Contain at least one combustion unit that is connected to a fuel-fired electric generator owned or operated by an entity that is subject to regulation of customer billing rates by the public utility commission (PUC) (excluding generators connected to combustion units subject to 40 CFR part 98, subpart D); and 2. Is located at a facility for which the sum of the nameplate capacities for all such electric generators is greater than or equal to 1 megawatt electric output, you have the following choices:

☐ I would like to use IVT for this configuration, and as a result, not report [inputs to equations](#) to the EPA for this configuration.
 ☐ I would like to report my [inputs to equations](#) for this configuration to the EPA. By doing this, I am waiving my right to make a confidentiality claim on the inputs to equations reported to EPA for this configuration.


Paperwork Reduction Act Burden Statement | Contact Us
e-GGRT RY2015.R45 | SPC-08


United States  
Environmental Protection  
Agency


Electronic Greenhouse Gas  
Reporting Tool

[HOME](#)
[FACILITY REGISTRATION](#)
[FACILITY MANAGEMENT](#)
[DATA REPORTING](#)

Hello, Richard Richards | [My Profile](#) | [Logout](#)

 e-GGRT Help

Using e-GGRT for Subpart C reporting

DR Enterprises - TEST  
**Subpart C: General Stationary Fuel Combustion (2015)**  
[Subpart C Overview](#) » [Single Unit Using Tiers 1, 2, or 3](#) » [IVT Test Unit 1](#) » [Equation Inputs Reporting](#)

**EQUATION INPUTS REPORTING**  
Use this page to indicate how you would like to report [inputs to equations](#) for this configuration.

\* denotes a required field

**CONFIGURATION INFORMATION**

Configuration Type	Single Unit Using Tiers 1, 2, or 3
Unit Name/ID	IVT Test Unit 1
Description	
Unit Type	OB (Boiler, other)
Will this configuration use IVT?	To be determined. Please answer the question(s) below.

**PLEASE ANSWER THE FOLLOWING QUESTIONS FOR THIS CONFIGURATION**  

Because this stationary combustion source configuration does not meet both of the following criteria: 1. Contain at least one combustion unit that is connected to a fuel-fired electric generator owned or operated by an entity that is subject to regulation of customer billing rates by the public utility commission (PUC) (excluding generators connected to combustion units subject to 40 CFR part 98, subpart D); and 2. Is located at a facility for which the sum of the nameplate capacities for all such electric generators is greater than or equal to 1 megawatt electric output, you have the following choices:

- ☐ I would like to use IVT for this configuration, and as a result, not report [inputs to equations](#) to the EPA for this configuration.
- ☐ I would like to report my [inputs to equations](#) for this configuration to the EPA. *By doing this, I am waiving my right to make a confidentiality claim on the inputs to equations reported to EPA for this configuration.*

[SAVE](#)
[Apply selection to all my configurations](#)
[CANCEL](#)

Paperwork Reduction Act Burden Statement | [Contact Us](#)


e-GGRT RY2015.R45 | SPC-08


**Question 3.** E-GGRT will ask you to confirm that you would like to report inputs and that you waive confidentiality claims to the inputs to equations entered for the configuration or whether you would like to return to Question 2 to reconsider this decision.

If you select the "Proceed with reporting my inputs to equations to the EPA" radio button and click SAVE, e-GGRT will return you to the **Edit Configuration Summary** page, where "This configuration will not use IVT for equations calculations and has chosen to report equation inputs to EPA." will be displayed in the CONFIGURATION INFORMATION section of the page.

If you select the "Return to the previous question" radio button, e-GGRT will return you to Question 2.


>> [Click this link to expand](#)


United States  
Environmental Protection  
Agency


Electronic Greenhouse Gas  
Reporting Tool

[HOME](#)
[FACILITY REGISTRATION](#)
[FACILITY MANAGEMENT](#)
[DATA REPORTING](#)

Hello, Richard Richards | [My Profile](#) | [Logout](#)

 e-GGRT Help

Using e-GGRT for Subpart C reporting

DR Enterprises - TEST  
**Subpart C: General Stationary Fuel Combustion (2015)**  
[Subpart C Overview](#) » [Single Unit Using Tiers 1, 2, or 3](#) » [IVT Test Unit 1](#) » [Equation Inputs Reporting](#)

**EQUATION INPUTS REPORTING**  
Use this page to indicate how you would like to report [inputs to equations](#) for this configuration.

\* denotes a required field

**CONFIGURATION INFORMATION**

Configuration Type	Single Unit Using Tiers 1, 2, or 3
Unit Name/ID	IVT Test Unit 1
Description	
Unit Type	OB (Boiler, other)
Will this configuration use IVT?	This configuration will use IVT for equations calculations and as a result, will not report equation inputs to EPA.

**PLEASE ANSWER THE FOLLOWING QUESTIONS FOR THIS CONFIGURATION**  

You have indicated that you are waiving your right to making a confidentiality claim for the inputs to equations reported to the EPA for this configuration. Would you like to proceed with reporting these inputs to equations or would you like to return to the previous question?

- ☐ Proceed with reporting my inputs to equations to the EPA.
- ☐ Return to the previous question.

[SAVE](#)
[Apply selection to all my configurations](#)
[CANCEL](#)

Paperwork Reduction Act Burden Statement | [Contact Us](#)

e-GGRT RY2015.R45 | SPC-08

 e-GGRT Help

Using e-GGRT for Subpart C reporting

DR Enterprises - TEST

**Subpart C: General Stationary Fuel Combustion (2015)**

[Subpart C Overview](#) » [Single Unit Using Tiers 1, 2, or 3](#) » [IVT Test Unit 1](#) » [Equation Inputs Reporting](#)

**EQUATION INPUTS REPORTING**

Use this page to indicate how you would like to report [inputs to equations](#) for this configuration.

\* denotes a required field

**CONFIGURATION INFORMATION**

Configuration Type	Single Unit Using Tiers 1, 2, or 3
Unit Name/ID	IVT Test Unit 1
Description	
Unit Type	OB (Boiler, other)
Will this configuration use IVT?	This configuration will use IVT for equations calculations and as a result, will not report <a href="#">equation inputs</a> to EPA.

**PLEASE ANSWER THE FOLLOWING QUESTIONS FOR THIS CONFIGURATION**

You have indicated that you are waiving your right to making a confidentiality claim for the [inputs to equations](#) reported to the EPA for this configuration. Would you like to proceed with reporting these inputs to equations or would you like to return to the previous question?

- ☐ Proceed with reporting my inputs to equations to the EPA.
- ☐ Return to the previous question.

**SAVE**

**Apply selection to all my configurations**

**CANCEL**

When e-GGRT returns you to the **Configuration Summary** page, your selection with respect to using IVT will be displayed in the CONFIGURATION INFORMATION section of the page. If you intend to make the same choice for all the configurations you report under subpart C, click the "Apply selection to all my configurations" button.

>> [Click this link to expand](#)

[illegible]

 e-GGRT Help

Using e-GGRT for Subpart C reporting

**DR Enterprises - TEST**

**Subpart C: General Stationary Fuel Combustion (2015)**

[Subpart C Overview](#) » [IVT Test Unit 1](#) » [Configuration Summary](#)

**CONFIGURATION SUMMARY**

For each stationary combustion configuration that uses Tiers 1, 2, or 3, subpart C requires both the reporting of fuel-specific emissions information and the reporting of emissions information aggregated at the configuration-level.

While both Fuel-Specific and Configuration-Level emissions are required in all cases, there is no order requirement on which must be entered first. If using the optional calculation spreadsheets, it is recommended that the user enter Fuel-Specific Emissions Information first. Links to the spreadsheets are provided on each Fuel-Specific Emissions page

To be able to enter the Fuel-Specific Emissions pages, the user must first select the relevant fuel (one at a time), and then the corresponding CO2 calculation methodology. Once a fuel is added the user may open the page for a specific fuel type to enter the required fuel-specific emissions information.

For additional information about subpart C reporting, please use the e-GGRT Help link (s) provided.

**CONFIGURATION INFORMATION**

Configuration Type	Single Unit Using Tiers 1, 2, or 3
Unit Name/ID	IVT Test Unit 1
Description	
Unit Type	OB (Boiler, other)
Maximum Rated Heat Input Capacity	400 (mmBtu/hr)
Will this configuration use IVT?	This configuration will not use IVT for equations calculations and <a href="#">has chosen to report equation inputs to EPA</a>
<a href="#">CHANGE</a> <a href="#">Apply selection to all my configurations</a>	

 [Edit this Configuration Information](#)

**CONFIGURATION-LEVEL EMISSIONS INFORMATION**

Total Biogenic CO2 Emissions (metric tons)	Total CO2 Emissions from Sorbent Usage (metric tons)	Status <sup>1</sup>	
		Incomplete	<a href="#">OPEN</a>

**FUEL-SPECIFIC EMISSIONS INFORMATION** (for fuels combusted at this reporting configuration)

Fuel	Calculation Period	Methodology	Status <sup>1</sup>		Delete
No fuels present					

 [ADD a Fuel](#)

[↑ Subpart C Overview](#)

<sup>1</sup> A status of "Incomplete" means that one or more required data elements are incomplete. For details, refer to the Data Completeness validation messages in your Validation Report by clicking the "View Validation" link on the overview page. (Note: if there are no validation messages for this subpart you will not see this link).